

## Fluid-o-Tech TH series rotary vane pumps



The Fluid-o-Tech magnetic drive rotary vane pumps range widens with the introduction of the TH series which combines the larger flow rate (500 to 1000 l/h at 1450 rpm at 1725 rpm) with the added benefit of the magnetic coupling.

The rare earths magnet ensure high performance and perfect alignment between the pump and the motor, extending the life of the unit. The absence of friction, usually caused by the rotation of the mechanical seal against the ceramic seat, allows a more efficient operation and therefore a low power consumption.

The Rotoflow TH Series pumps offer multiple options to configure the product to the specific need of each customer. The housing is available in AISI 303 or brass. The internal components include AISI 303 rotor, carbon graphite pumping chamber and a choice of NBR, EPDM or Viton seals.

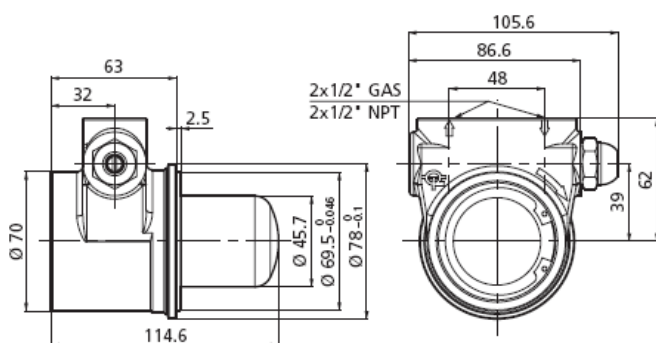
### Benefits of magnetic drive

- + longer service life
- + no mechanical seals
- + totally sealed body
- + low maintenance
- + less power consumption
- + smooth transmission

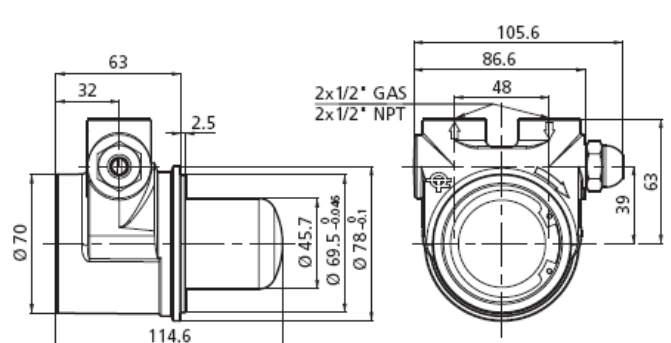
### Features of the series

- + 1/2" GAS or NPT threaded ports
- + Built-in relief valve
- + NSF listed pumps available for potable water
- + Max speed: 1725 rpm
- + Max system pressure: 18 bar (260 PSI)
- + Max temperature: 70°C (158°F)

### Technical Specification



Dimensions in mm

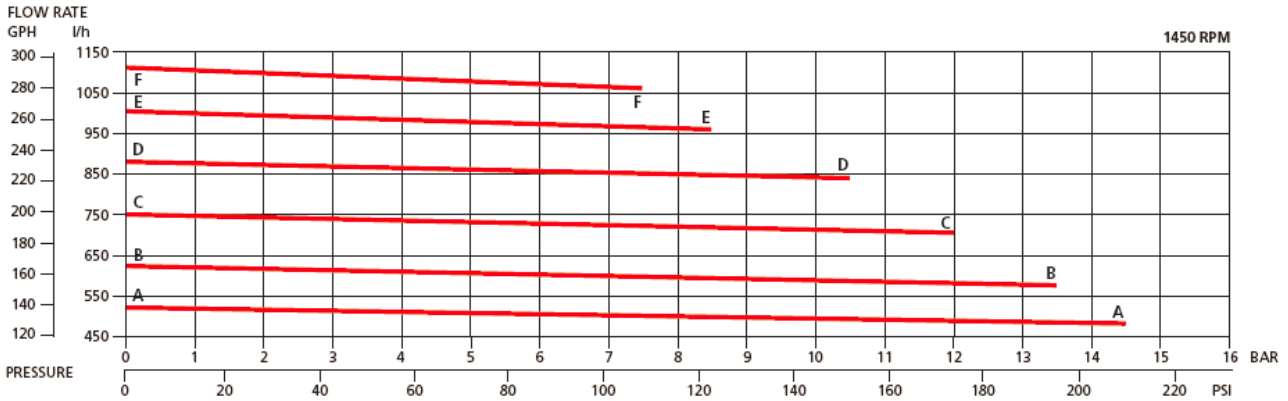


Dimensions in mm

## Performance Data

Model series	50xA	60xA	70xA	80xA	90xA	100xA
Figure	A-A	B-B	C-C	D-D	E-E	F-F

The x in the model series number designates the bypass option.



Note: Characteristics with water at 20°C and without by-pass. Use filter before pump inlet not larger than 20 microns. Pump weight: 2.1kg.

For applications involving other fluids, high temperatures, unusual processing conditions or speed higher than 1725 rpm please contact us.