

Fluid-o-Tech MGK series



The MGK200, MGK300 and MGK300 High Viscosity pumps are designed to complete the existing MG200 series with improved performance in terms of flow rate, pressure, capability to handle high viscosity fluids. Materials used in pump manufacture mean that there is a variant for most applications, from food handling to industrial and chemical uses.

The housing of the pump and the internal metal parts are available in AISI 303, AISI 316L or SAF 2205. The gears are available in PTFE or Peek™. The driving magnet is available in Ferrite or in rare earths. The unit is capable of handling relatively high temperature fluids with low coefficient of expansion.

The pulsation-free and quiet operation is the result of precision gears accurately assembled and balanced within the housing, combined with the magnetic coupling.

Main Applications

- + Medical and surgical equipment
- + Hemodialysis machines
- + Seal flush
- + Laser apparatus
- + Lubrication
- + Ink-jet printing systems
- + Cooling systems
- + Laboratory instrumentation
- + Water purification and ultra-filtration
- + Sampling
- + Food processing equipment

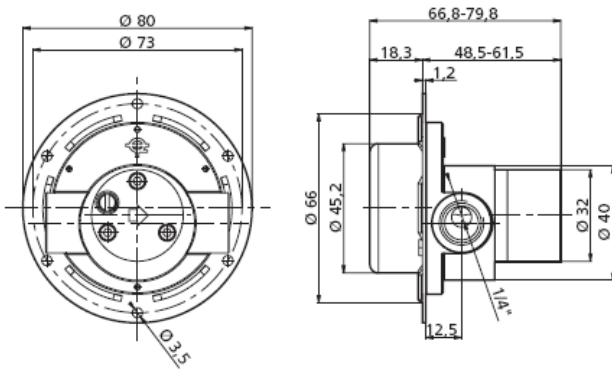
Technical Specification

- + Self priming
- + Max liquid temperature dependent on gear material (with PTFE gears: -45 to +50°C / -49 to +122°F; with Peek™ gears: -45 to +120°C / -49 to +248°F)
- + Max system pressure: 20 bar / 290 psi

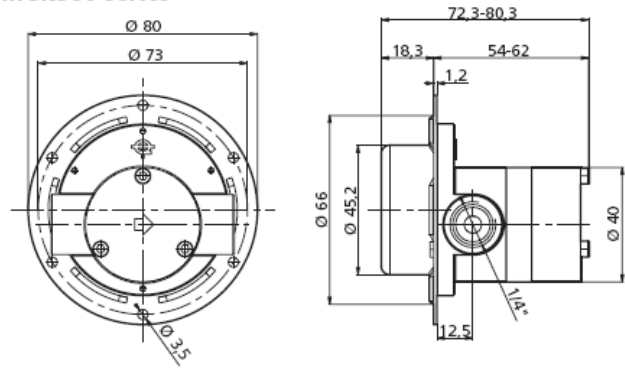
Composition / materials / options

Gear widths	Gear materials	Housing materials	Relief valve	Type of connection	Seals material
4 mm 9 mm 13 mm 17 mm	PTFE Peek™	AISI 303 AISI 316 SAF 2205	only available on MGK200 series	1/4" GAS in line 1/4" NPT in line	Silicon NBR PFTE Viton

MGK200 series

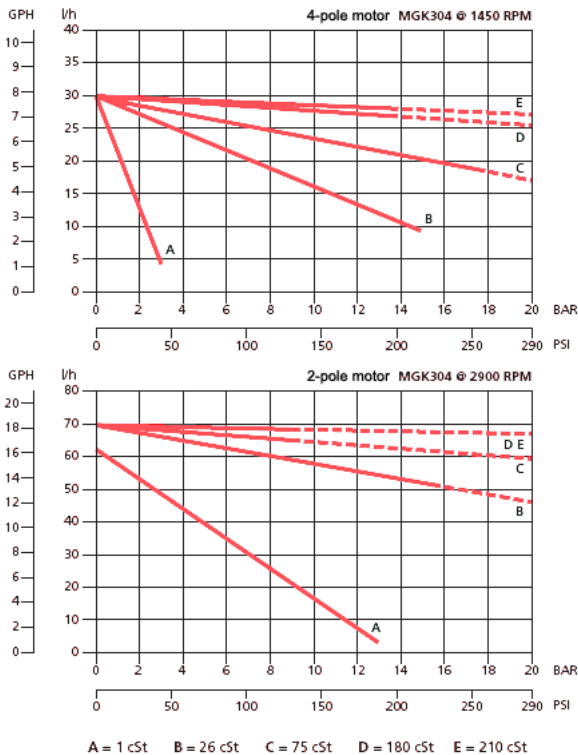


MGK300 series

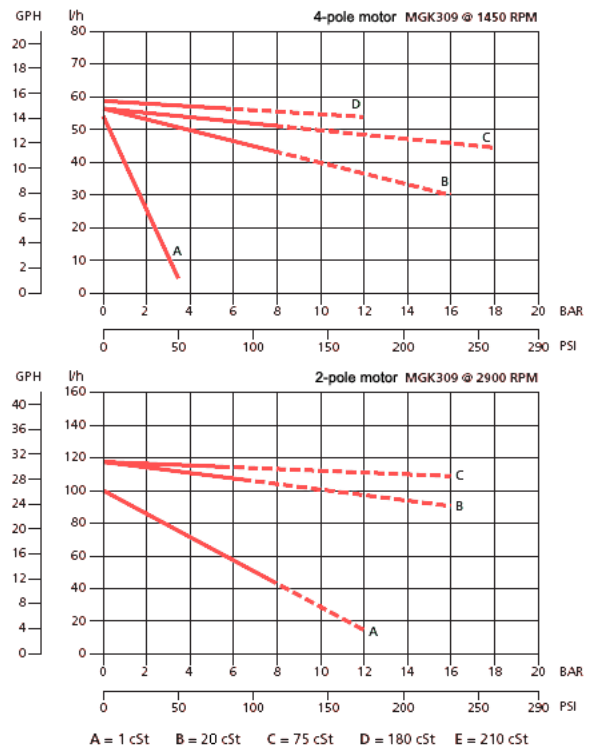


Performance Data

MGK304*



MGK309*



— Operating range with ferrite magnet
- - - Operating range with rare earth magnet

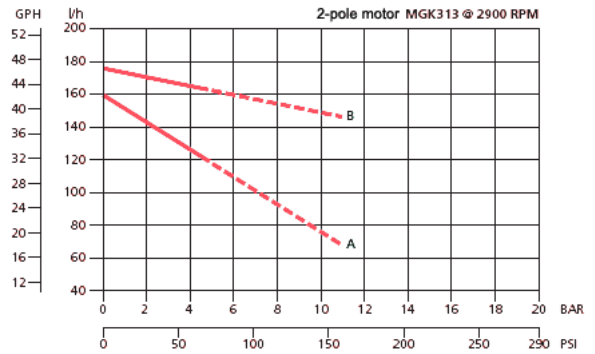
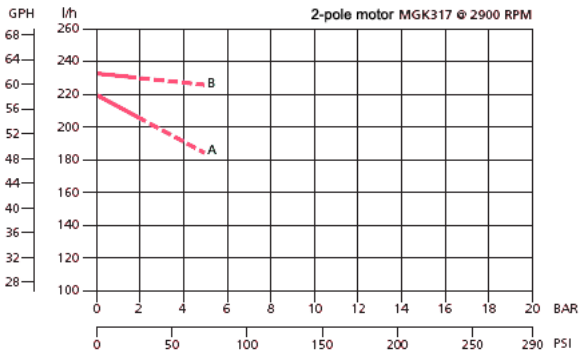
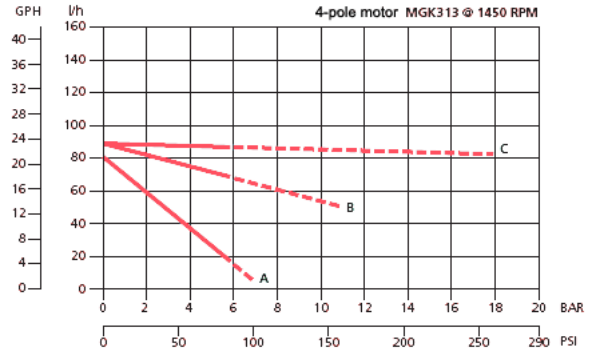
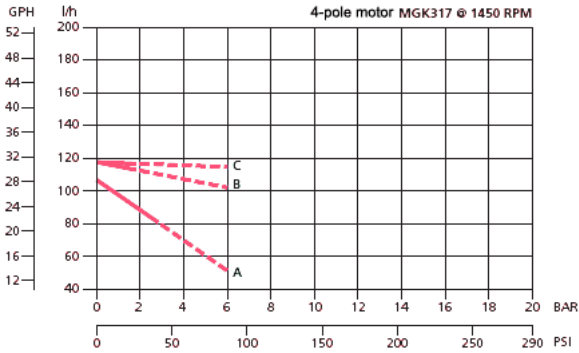
— Operating range with ferrite magnet
- - - Operating range with rare earth magnet

* MG304 is MG300 with 4mm gears

* MG309 is MG300 with 9mm gears

MGK313*

MGK317*



A = 1 cSt B = 20 cSt C = 75 cSt D = 180 cSt E = 210 cSt

A = 1 cSt B = 20 cSt C = 75 cSt D = 180 cSt E = 210 cSt

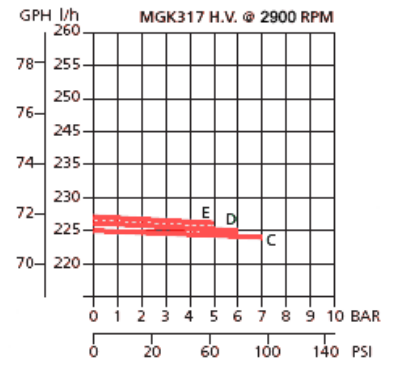
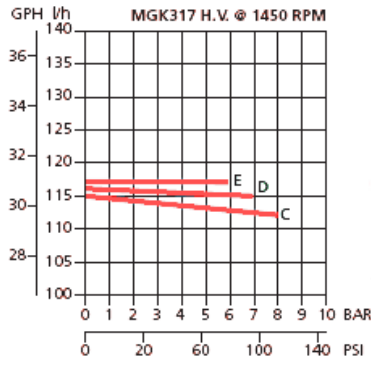
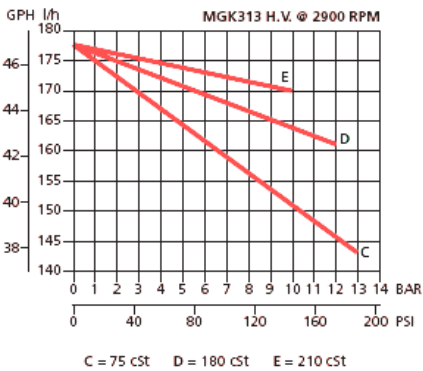
— Operating range with ferrite magnet
- - - Operating range with rare earth magnet

— Operating range with ferrite magnet
- - - Operating range with rare earth magnet

* MG317 is MG300 with 17 mm gears

* MG313 is MG300 with 13 mm gears

The chart below shows the High Viscosity versions of the MGK300. Note that the scale has changed. The inlet pipe diameter must be at least 10 mm.



C = 75 cSt D = 180 cSt E = 210 cSt

C = 75 cSt D = 180 cSt E = 210 cSt

C = 75 cSt D = 180 cSt E = 210 cSt