

Fluid-o-Tech MGC AC series



The magnet drive principle provides a totally sealed pump chamber which is capable of handling a wide range of corrosive liquids with a high degree of safety. The pump housing is available in AISI 316L, SAF 2205 or AISI 303. The gears are available in PTFE or Peek™.

The MGC AC series combines the MG 200 series pump head with either a single phase (MGC3) or three phase (MGC7) AC motor unit. In operation the MG200 Series pumps are quiet, pulsation-free and capable of handling relatively high temperature liquids i.e. 120°C (248°F) with a low coefficient of expansion.

The coupling with the MGC3 and MGC7 AC units is designed for heavy duty, and provides reliable and quiet operation in a compact size. The pole-to-pole alignment of the two magnets provides the driving motion to the pump. Decoupling will occur when the pump load exceeds the coupling torque between the magnets.

- + 1/8" NPT or GAS ports
- + Relief valve available upon request
- + NSF listed pumps for potable water

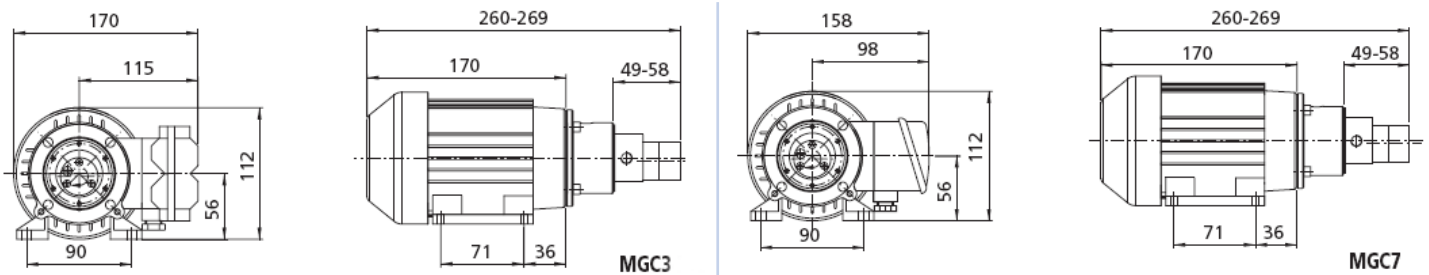
Main Applications

- + Medical and surgical equipment
- + Hemodialysis apparatus
- + Seal flush
- + Laser apparatus
- + Lubrication
- + Ink-jet printing systems
- + Cooling systems
- + Laboratory instrumentation
- + Water purification and ultra-filtration
- + Sampling
- + Food processing equipment

Technical Specification

Composition / materials			Technical information	
Housing	Gear	Seal	Temp range	Max pressure
316 L SS	PTFE	PTFE	45 to +50°C / -49 to +122°F	20 bar / 290 psi
316 L SS	Peek™	PTFE	45 to +120°C / -49 to +248°F	20 bar / 290 psi

	MGC3	MGC7
Voltage (v)	220 AC	220/380 AC
Frequency (Hz)	50	50
Poles	2	2
Rated speed (rpm)	2,610	2,710
Current consumption (A)	1.2	0.92/0.53
Output power (W)	110	90
Pump motor weight (kg)	3.3	2.5



Performance Data

