

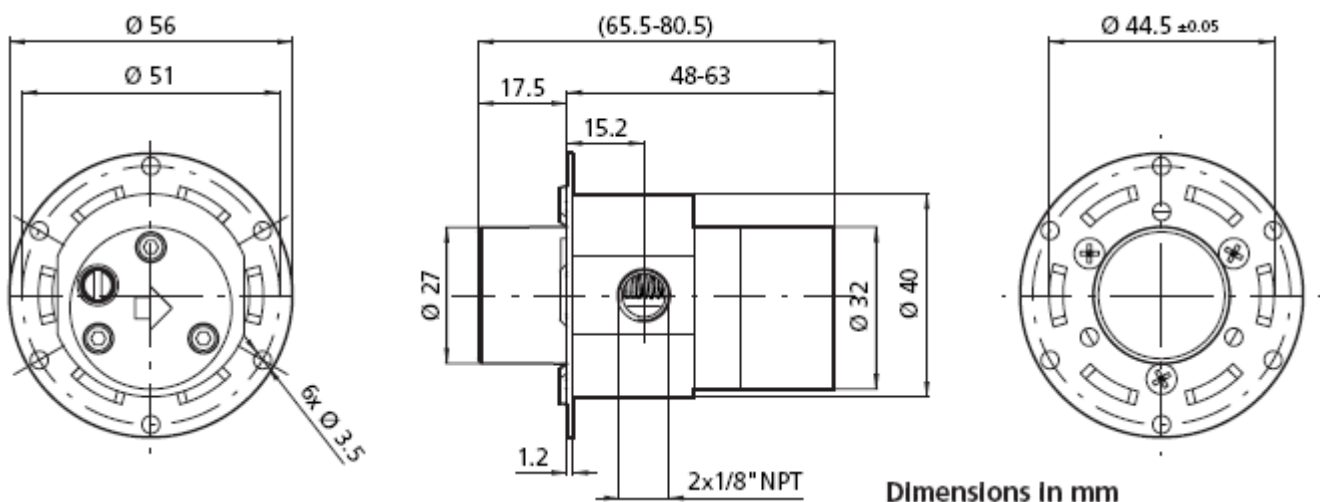
Fluid-o-Tech MG 200 series magnetic drive gear pump



The "MG 200" Series magnet drive gear pumps are compact precision performance pumps for high technology applications. The magnet drive principle provides a totally sealed pump chamber capable of handling a wide range of corrosive liquids with a high degree of safety.

The housing of the pump and the internal metal parts are in AISI 316 L stainless steel and the gears are available in PTFE or Peek™.

In operation the MG 200 Series pumps are noiseless, pulsation-free and capable of handling relatively high temperature fluids with low coefficient of expansion.



The principle of the magnetic drive comprises an inner magnet embodied in the pump and connected to the driving gear, and an outer magnet connected to the motor shaft.

The pole-to-pole alignment of the two magnets provides the driving motion to the pump. Decoupling will occur when the pump load exceeds the maximum coupling torque provided by the alignment of the two magnets.

Main Applications

- + Medical and surgical equipment
- + Hemodialysis apparatus
- + Seal flush
- + Laser apparatus
- + Lubrication
- + Ink-jet printing systems
- + Cooling systems
- + Laboratory instrumentation
- + Water purification and ultra-filtration
- + Sampling
- + Food processing equipment

Technical Specification

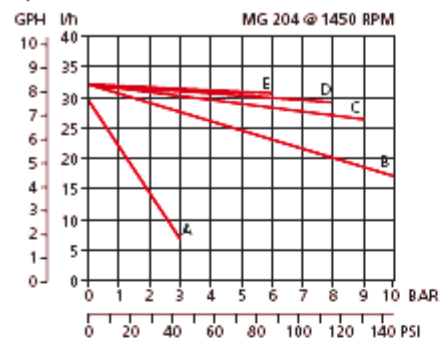
Composition / materials			Technical information	
Housing	Gear	Seal	Temp range	Max pressure
316 L SS	Teflon™	Teflon™	45 to +50°C / -49 to +122°F	20 bar / 290 psi
316 L SS	Peek™	Teflon™	45 to +120°C / -49 to +248°F	20 bar / 290 psi

- + 1/8" NPT or GAS ports
- + Relief valve available upon request
- + NSF listed pumps for potable water

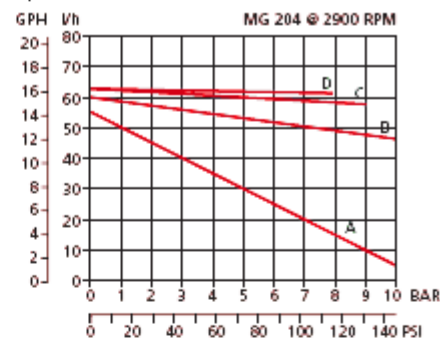
Performance Data

MG 200 with 4 mm gears

4-pole motor

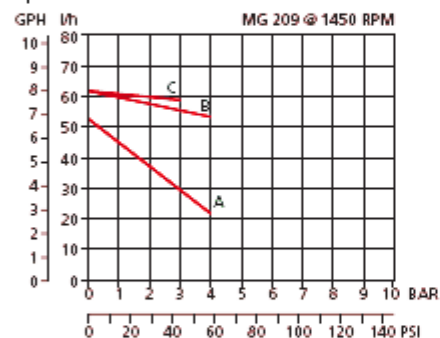


2-pole motor

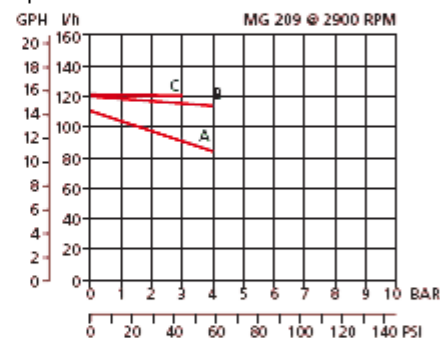


MG 200 with 9 mm gears

4-pole motor

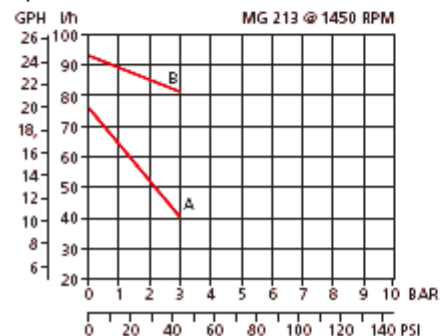


2-pole motor

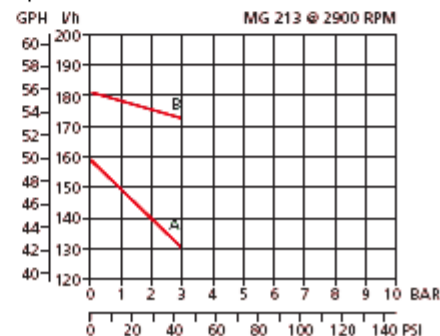


MG 200 with 13 mm gears

4-pole motor



2-pole motor



A = H₂O B = 20 cSt C = 70 cSt D = 160 cSt E = 200 cSt