

## Fluid-o-Tech high volume rotary vane pumps



The high volume rotary vane pumps manufactured by Fluid-o-Tech and sold worldwide under the trademark Rotoflow are available in six flow ratings to meet the needs of high volume pumping.

### Main Applications

- + Post-mix drink dispensers
- + Cooling and booster systems
- + Fuel injection systems
- + Reverse osmosis
- + Ultra-filtration

### Available upon request

- + Viton/EPDM seals (suffix - V/E)
- + NSF listed pumps for potable water. (In this case the prefix for each model is PA instead of PO.)

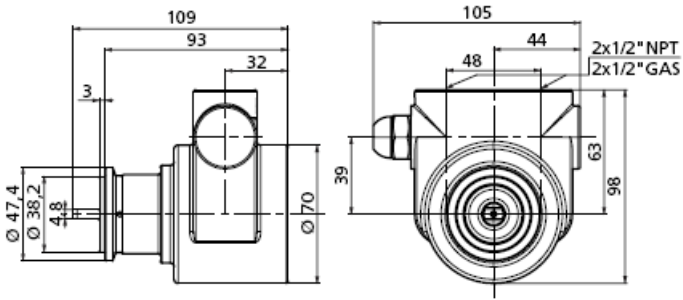
### Technical Specification

The rotary vane pump with brass or stainless steel body utilizes a stainless steel AISI 303 rotor, while the pumping chamber and the vanes are in graphitic carbon.

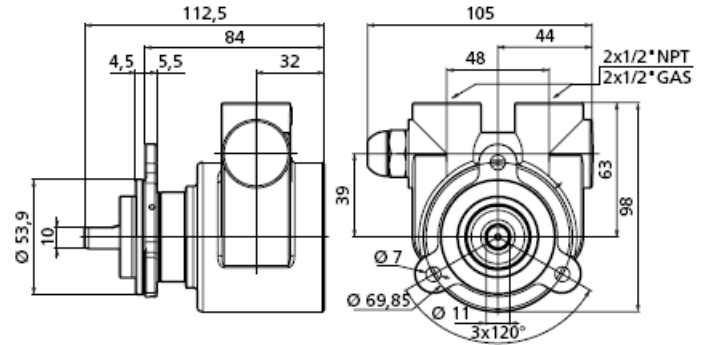
Inlet and outlet ports are 1/2" NPT/GAS female threaded and the pump is equipped with a built-in adjustable by-pass valve.

The pump can be connected to coupling direct motor with a metallic clamp or to M71 and M80 UN-ELMEC frame motors with the Fluid-o-Tech coupling and adapter set.

Maximum operating temperature: 70°C (158°F)



Dimensions in mm



Dimensions in mm

## Performance Data

Model series (brass)	50x	60x	70x	80x	90x	100x
Model series (stainless steel)	51x	61x	71x	81x	91x	101x
Flow (l/h) at 2 bar	540	640	740	840	940	1040
Flow (l/h) at 7 bar	520	620	720	820	920	1020
Flow (l/h) at 14 bar	497	597	697	797	897	997
Figure	L-L	M-M	N-N	P-P	R-R	S-S

x in the series number above designates the bypass and mount options.

