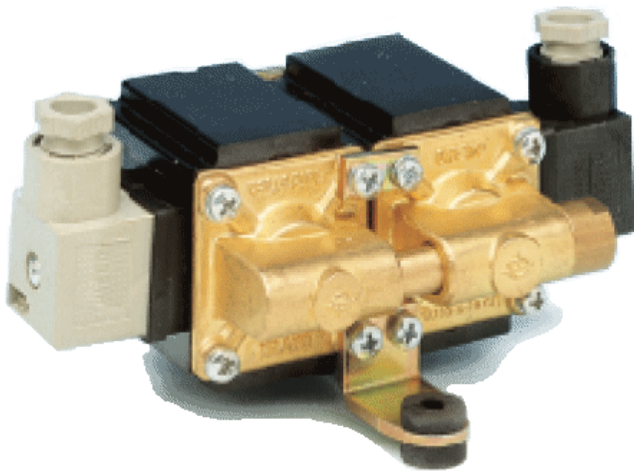


Fluid-o-Tech Duplex Pump

The Duplex oscillating piston pump is one of a range of new generation oscillating pumps of compact size which embodies design excellence coupled with outstanding performance and reliability.

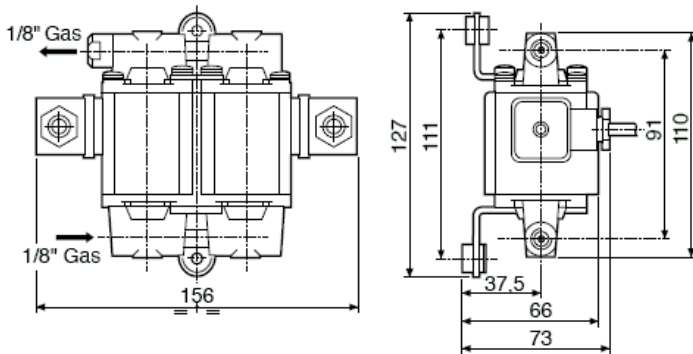
The Duplex pump, designed for pumping liquids at low pressure and capacity, operates on the oscillating piston principle. Motion occurs when the coil is energized with unidirectional impulses created by an alternating current passing through a diode.



HYW \ b]WU` `GdYW]ÙWUh]cbg

The pump is made of brass, with 1/8" female threaded inlet and outlet ports. The ball valves are in glass / EPDM. The piston is stainless steel. The pump may be mounted in any orientation and on shock absorbing supports for the quietest operation.

Voltage: 220/240V @50Hz
100/110V @50/60 Hz
Power: 140 W
Current: 1.6 A @ 220V/50Hz
2.7 A @ 110V/60Hz



Typical Applications

- + Beverage vending machines
- + Post-mix drink dispensers
- + Reverse osmosis
- + Water carbonators
- + W|c|æÉ, |c|æcá [}

Performance Data

