

Fluid-o-Tech brass rotary vane pumps



Sold worldwide under the trademark Rotoflow, these volumetric pumps are designed for pumping water and moderately aggressive liquids with low flow at high pressure.

The series includes a total of 40 variants, determined by the by-pass and filter configuration, based on 8 basic pump volumes (see performance data table below).

Main Applications

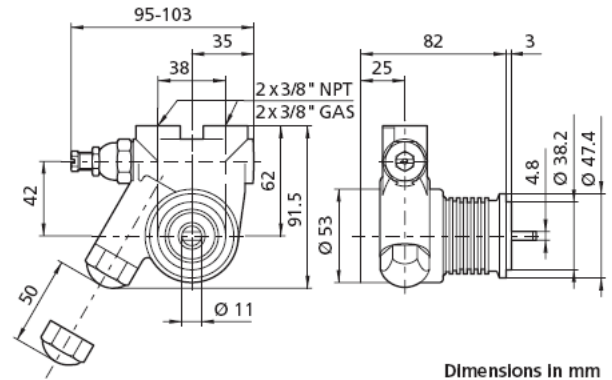
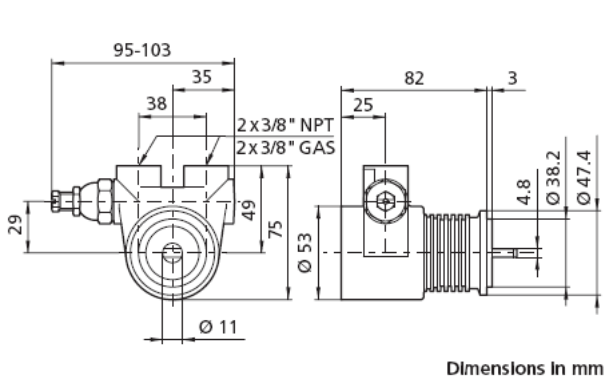
- + Beverage vending machines
- + Post-mix drink dispensers
- + Espresso coffee machines
- + Cooling systems
- + Reverse osmosis
- + Ultra-filtration
- + Water dispensers
- + Cooling systems

Available upon request

- + Viton / EPDM seals (suffix - V/E)
- + built-in relief valve
- + built-in 71 mesh filter
- + flange mount
- + NSF listed pumps for potable water (PA series)
- + WRAS approved pumps (PW series)

Technical Specification

The rotary vane pump is brass made with a stainless steel AISI 303 rotor, while the pumping chamber and the vanes are in carbon graphite. The inlet and outlet ports are 3/8" NPT/GAS threaded. The pumps are designed to be directly mounted to the motor with a stainless steel clamp. Maximum operative temperature: 70°C (158°F).



Performance Data

Model series:	07x	10x	150x	20x	250x	30x	350x	40x
Flow (l/h) at 2 bar	100	150	190	236	295	345	390	445
Flow (l/h) at 7 bar	89	139	179	225	284	334	379	434
Flow (l/h) at 14 bar	70	120	160	206	265	315	360	415
Figure	A-A	B-B	C-C	D-D	E-E	F-F	G-G	H-H

